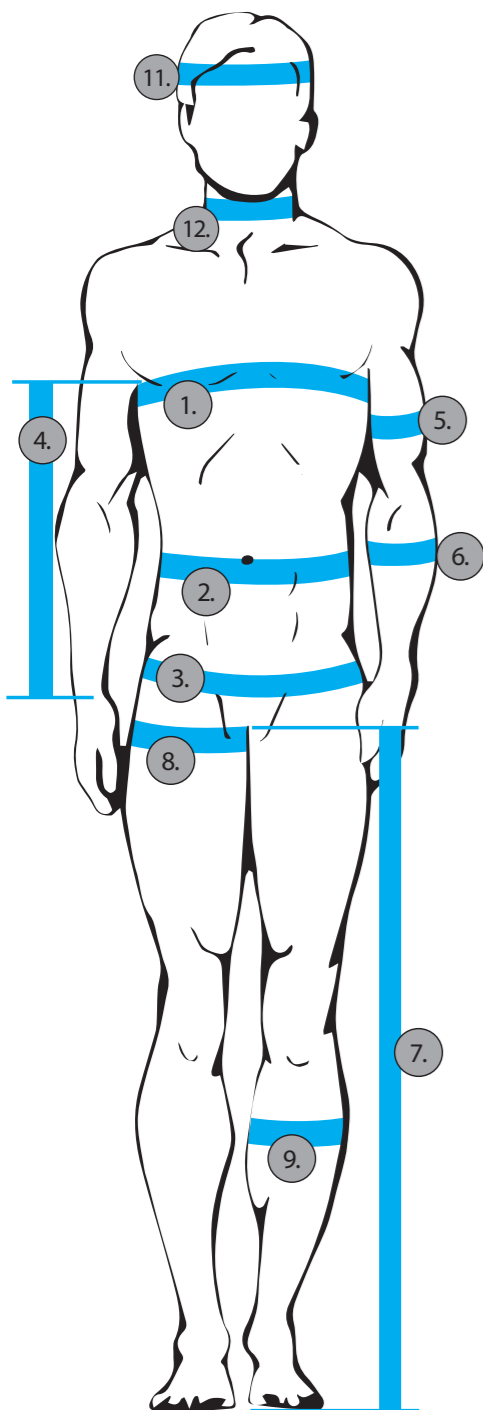


# CAMARO

## DRY DIVING SUIT SIZE CHART

measurements are taken on normal clothing!  
 - not in underwear  
 - not over undergarments



### 1. CHEST CIRCUMFERENCE

measure across the fullest part of the breast

### 2. WAIST CIRCUMFERENCE

Measure around the waist, the narrowest point between the bust and hips

### 3. HIP CIRCUMFERENCE

measure around the widest part of your hips and buttocks

### 4. INNER ARM LENGTH

measure from the base of the armpit to the crook of the arm, all the way to the wrist

### 5. BICEPS CIRCUMFERENCE

measure the thickest part between your armpit and elbow

### 6. FORE ARM CIRCUMFERENCE

measure the thickest part between your elbow and wrist

### 7. INNER LEG LENGTH

measure from the crotch to the floor (without shoes)

### 8. THIGH CIRCUMFERENCE

measure directly below the crotch

### 9. CALF CIRCUMFERENCE

measure the thickest part below the knee on the calf

### 12. NECK CUFF

NEOPRENE

NECK CIRCUMFERENCE

LATEX  S  M  STANDARD

L  XL  XXL

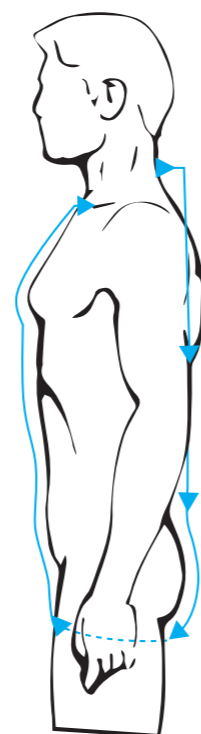
### ARM CUFF

XS  S  M  L

### BOOT SIZE

THERMOSOCKS  THERMO TI BOOTS

PRO BOOTS (ADDITIONAL CHARGE ON DRYTEC)



### HEIGHT

### WEIGHT

### 10. BODY TRUNK LENGTH

FROM THE BOTTOM NECK THROUGH THE CROTCH TO THE 7TH CERVICAL VERTEBRA

### EMBROIDERY ACCENT COLOUR

PEACH FUZZ  SUNSET ORANGE

VELVET RED  BERRY KISS  LAVENDER BLOOM

ICY BLUE  LAGOON BLUE

### FABRIC COLOR

BLUE GRAPHIT COMBINATION

JET SET GREEN COMBINATION (ONLY PROTEC)

BLACK

RESCUE (ONLY RESCUE)

**MODEL** DRYTEC AIR .....  SIZE \_\_\_\_\_

PROTEC AIR .....  SIZE \_\_\_\_\_

RESCUE .....  SIZE \_\_\_\_\_

**ATTACHED HOOD** <sup>11.</sup> .....  YES  NO

HEAD CIRCUMFERENCE \_\_\_\_\_

**ATTACHED POCKET** .....  1  LEFT  
 PROTEC AIR + RESCUE 1 SIDE POCKET INCLUDED  2  RIGHT

**EMBROIDERY NAME** .....  YES  NO

POSITION OF THE EMBROIDERY  
 EMBROIDERY ON PATCH ONLY FOR PROTEC AIR AND RESCUE

**NECK**  NECK  POCKET

**VALVES** .....  YES  NO

DUMP VALVE INSTALLATION ON LOWER ARM POSSIBLE

ADDITIONAL CHARGE FOR APEKS ONLY ON DRYTEC AIR

**ABRASION PROTECTION** .....  YES  NO

KNEE/ELBOW/ BUTTOCKS ONLY ON PROTEC AIR + RESCUE

**BACK REINFORCEMENT** .....  YES  NO

ON PROTEC AIR + RESCUE INCLUDED

**BUNGEE CORD / DAISY CHAIN ON LOWER ARM** .....  YES  NO

ONLY ON PROTEC AIR + RESCUE

**KNEE PROTECTOR** .....  YES  NO

INSERT PROTECTOR ( 2 LAYERS), ONLY POSSIBLE FOR PROTEC AIR + RESCUE

**KUBI DRY GLOVE SET** .....  YES  NO

**FIXED RING SYSTEM** .....  NECK  WRIST

SUPPLIED BY CUSTOMER, PLEASE MARK THE BOX

**ZIPPER TYPE** .....  BDM  TI ZIPP

**DIRECTION: ZIP ON THE CUSTOMER'S LEFT OR RIGHT SHOULDER**

(STANDARD PP ON LEFT SHOULDER)

**PEE VALVE** .....  YES  NO

SUPPLIED BY CUSTOMER

**ABRASION RESISTENT MATERIAL KNEE + ELBOW** .....  JA  NEIN

ONLY POSSIBLE ON PROTEC AIR, INCLUDED ON RESCUE

**UBL HEAT COLLAR + 5MM TITANIUM HOOD** .....  JA  NEIN

INCLUDED ON RESCUE

**INFLATOR HOSE** .....  YES  NO

**OTHER** \_\_\_\_\_

\_\_\_\_\_

\_\_\_\_\_

\_\_\_\_\_

### PRICE

**TOTAL**

# CAMARO

## DRY DIVING SUIT CONTACT DETAILS

DATE:

DEALER:

NAME:

BILLING ADDRESS:

DELIVERY ADDRESS:

PHONE:

E-MAIL:

COMMENTS/OTHER:

# CAMARO

## DRY DIVING SUIT SIZE CHART

